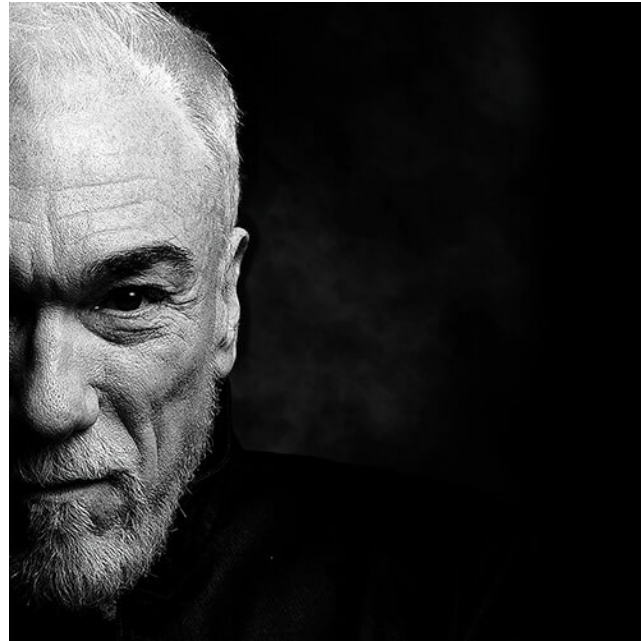


## Upcoming ASL-Interpreted Performances



### All the Devils Are Here How Shakespeare Invented the Villain

created and performed by **PATRICK PAGE**  
directed by **SIMON GODWIN**  
McGuire Proscenium Stage

#### An artful exploration of evil

Shakespeare's greatest villains — Richard III, Lady Macbeth, Claudius and more — have captivated and tormented audiences for centuries. After decades of embodying the likes of Hades, Scar and the Green Goblin, acclaimed actor Patrick Page continues to be drawn to the layered motivations and complex psyches of these infamous evildoers. In this chilling and compelling solo show, Page sheds the skin of one character as he jumps into the next while exploring how each villain is a window into the depths of the human heart. He concludes by prompting the audience with an even darker reflection: to confront and accept the trappings of evil inside us all.

#### ASL-Interpreted Performances

Friday, November 1 at 7:30 p.m.  
Saturday, November 9 at 1 p.m.



### A Christmas Carol

by **CHARLES DICKENS**  
adapted by **LAVINA JADHWANI**  
directed by **ADDIE GORLIN-HAN**  
based on the original direction by **JOSEPH HAJ**  
Wurtele Thrust Stage

#### A celebration of 50 years

A miserly and miserable man, Ebenezer Scrooge greets each Christmas with “Bah! Humbug!” until he is visited one Christmas Eve by the Ghosts of Christmas Past, Christmas Present and Christmas Future. In Charles Dickens’ beloved classic, the three spirits show Scrooge happy memories from his past, difficult realities from the present and a grim future should he continue his closed-hearted ways. Throughout his journey, Scrooge is forced to reckon with the man he has become and contemplate the man he could be — but only if his restless night leads to a change of heart by morning. The Guthrie’s cherished tradition celebrates its 50th year and continues to delight audiences of all ages this holiday season.

#### ASL-Interpreted Performances

Saturday, November 30 at 1 p.m.  
Thursday, December 5 at 7:30 p.m.



GUTHRIE  
THEATER

## The Lehman Trilogy

### This performance is ASL-interpreted.

The Guthrie offers a variety of accessibility services to help ensure greater access for all. To learn more, visit [www.guthrietheater.org/access](http://www.guthrietheater.org/access). Thank you for joining us, and enjoy the show!

Accessibility programs sponsored by **UNITED HEALTH FOUNDATION\***



**NOTE:** ASL interpretation will begin approximately 15 minutes before curtain.

### Synopsis

In 1844, Heyum Lehmann arrives in New York from Rimparr, Bavaria. Heyum soon becomes Henry Lehman, opens a store in Montgomery, Alabama, and welcomes his younger brothers Emanuel and Mayer into the business: Lehman Brothers Fabrics and Suits. The brothers shift from selling fabric to selling raw cotton to mills — ultimately moving into banking and relocating the business to Wall Street in the wake of the Civil War.

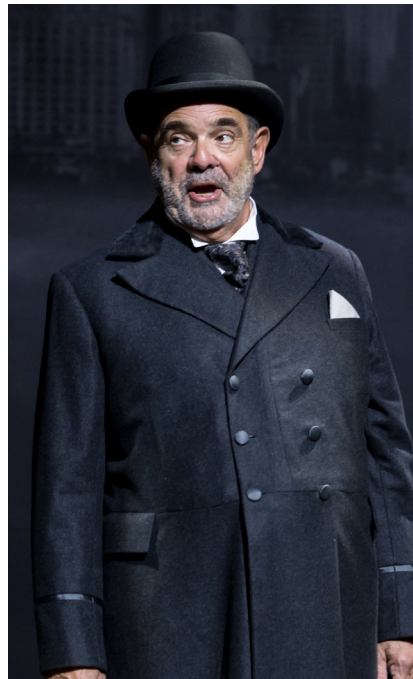
The family and firm continue to grow as a new generation of Lehmans pushes the company into the 20th century. The new visionary, Emanuel’s son Philip, eventually edges the founders to the periphery while his cousin Herbert, Mayer’s son, takes his talents into politics. After the stock market’s collapse in 1929, Philip’s son Bobby tenaciously guides the company through the Great Depression and into investing in arms during World War II. He then finds himself the sole Lehman left at the company and chafes at his cousin Herbert’s New Deal-era regulations.



PHOTO: WILLIAM STURDIVANT, MARK NELSON AND EDWARD GERO (DAN NORMAN)

After expanding internationally and establishing a trading division, Bobby is succeeded by outsiders Pete Peterson and Lew Glucksman. In 2008, long after the final Lehman is gone, their namesake company collapses into bankruptcy during the subprime mortgage crisis, ending a 164-year legacy.

## Character Signs



**Henry Lehman**  
“H” at temple  
INTERPRETED BY: JAMES



**Emanuel Lehman**  
“E” at left shoulder  
INTERPRETED BY: ERIN/JAMES



**Mayer Lehman**  
“M” at top of left hand  
like “potato”  
INTERPRETED BY: ERIN

**Philip Lehman**  
“P” at left shoulder  
INTERPRETED BY: ERIN

**Herbert Lehman**  
“H” at top of left hand  
INTERPRETED BY: JAMES

**Pauline Sondheim**  
“P” at right cheek  
INTERPRETED BY: ERIN

**Ruth Lamar**  
“R” at right cheek  
INTERPRETED BY: ERIN

**Lew Glucksman**  
Right hand “L” like “early”  
INTERPRETED BY: ERIN

**Bobby Lehman**  
“B” at left shoulder  
INTERPRETED BY: JAMES

### ADDITIONAL SIGNS:

**Lehman Brothers**  
“L” at heart and “brother”

**Montgomery**  
“M” like “government”

## Meet the ASL Team



**Erin Gardner** (Performance Interpreter, she/her) is pleased to be back at the Guthrie this season, having previously interpreted such favorites as *Tribes*, *Roman Holiday*, *The Taming of the Shrew* and *Guys and Dolls*. She also interprets for Broadway Across America, Chanhassen Dinner Theatres and History Theatre, among others. In addition to her interpreting work, Erin is an actress who has been seen on stages all over the Twin Cities, including numerous productions here at the Guthrie. A nationally certified freelance interpreter, she attended the Interpreter Training Program at St. Catherine University, and she holds a Bachelor of Fine Arts in Theatre from Southern Methodist University.



**James Gardner** (Performance Interpreter, he/him) has been a nationally certified interpreter for more than 25 years, and he is excited to be interpreting in his 15th year with the Guthrie! A graduate of the University of Northern Iowa with a B.A. in Theatre Arts: Acting, James has toured nationally as an actor with several deaf theater companies, including Sunshine Too (Rochester, New York), National Theatre of the Deaf (Hartford, Connecticut) and Mixed Blood Theatre’s touring production of *The Deaf Duckling*. Some of his favorite ASL theater performances include shows at the Guthrie Theater (*Tribes*, *The Taming of the Shrew*, *Guys and Dolls*, *South Pacific*), Park Square Theatre (*Hamlet*, *Romeo and Juliet*, *Richard III*) and Broadway tours (*Dear Evan Hansen*, *Rock of Ages*, *Wicked*, *Billy Elliot*, *Once*, *Rent*, *In the Heights*).

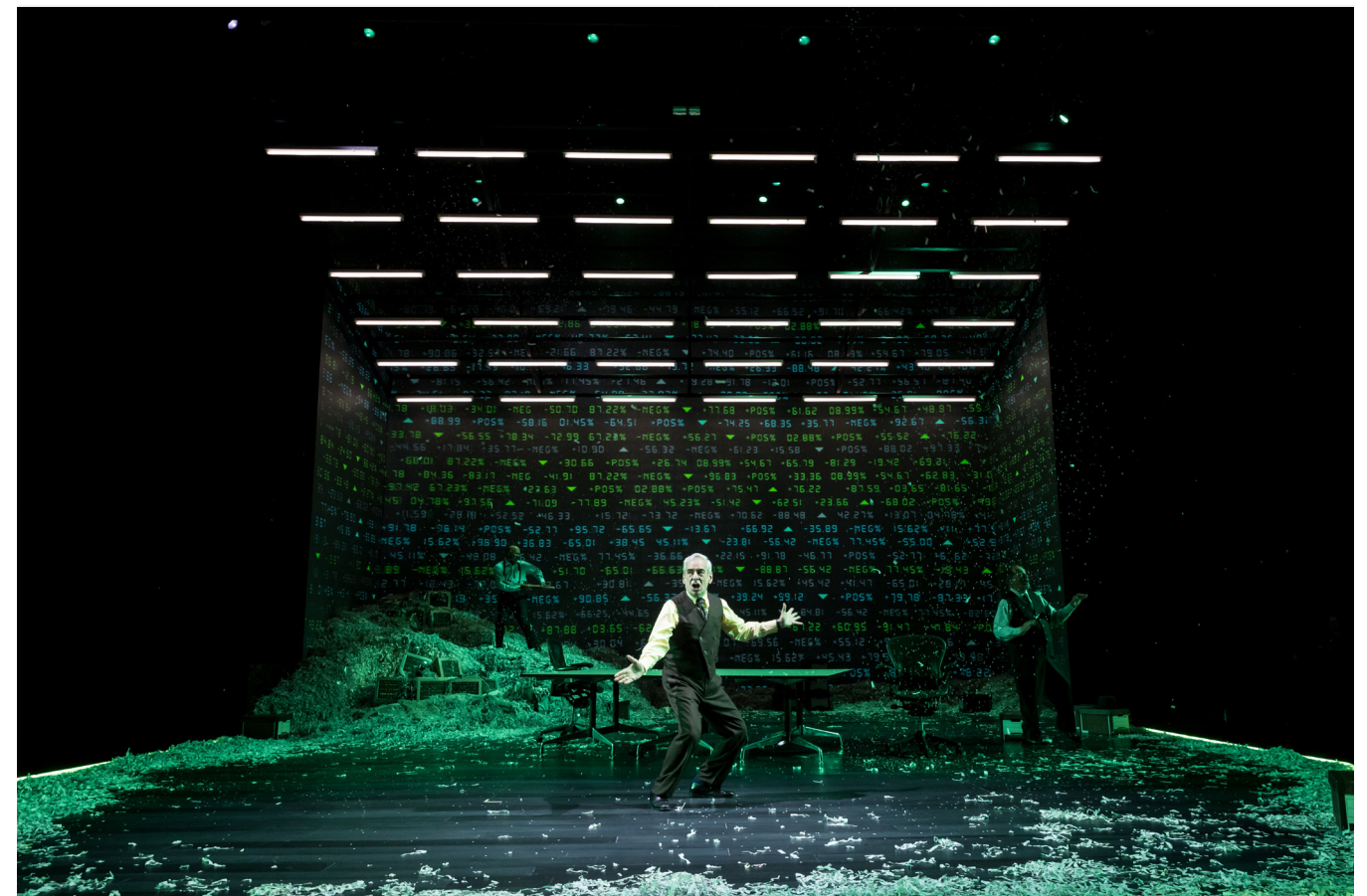


PHOTO: WILLIAM STURDIVANT, MARK NELSON AND EDWARD GERO (DAN NORMAN)